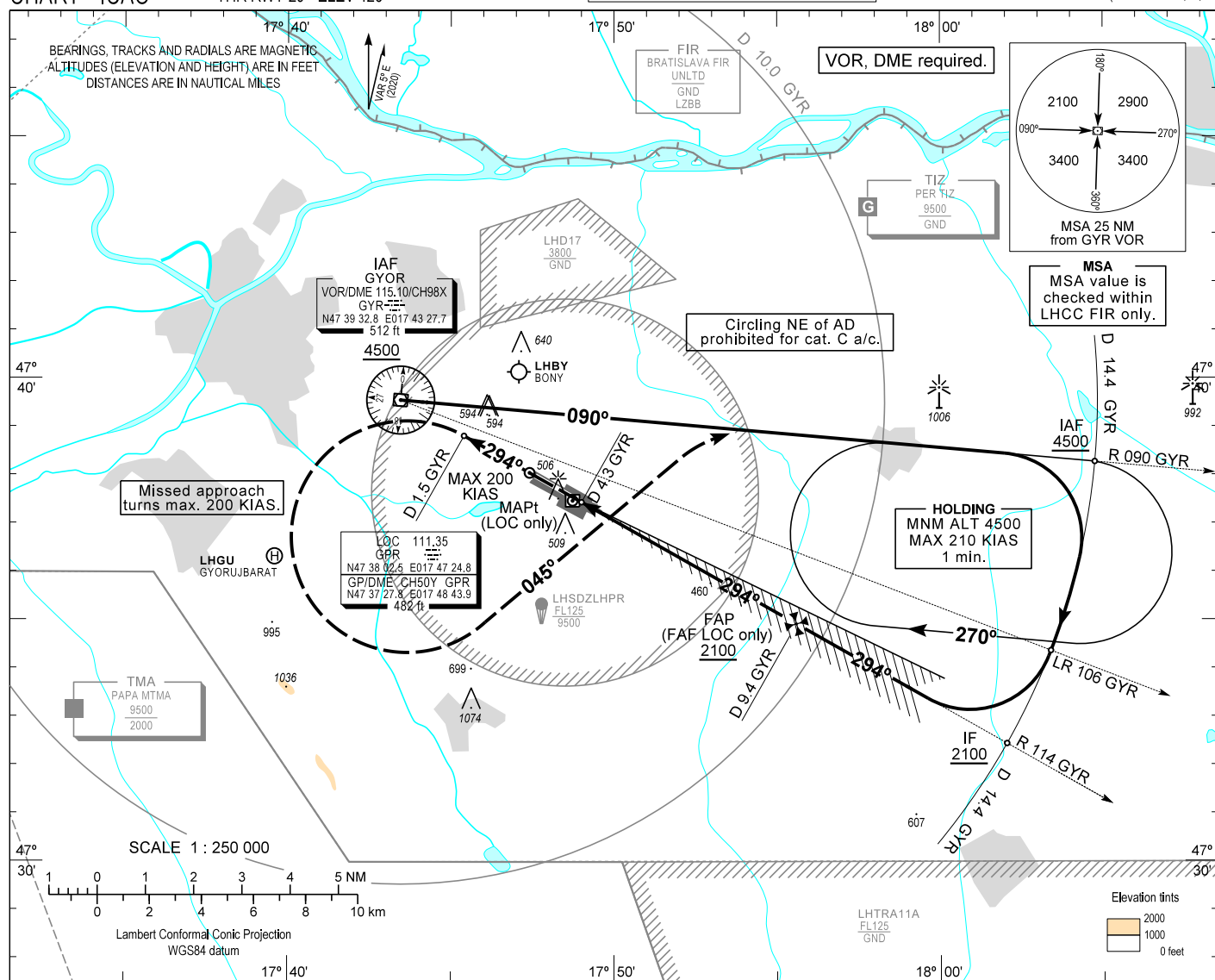
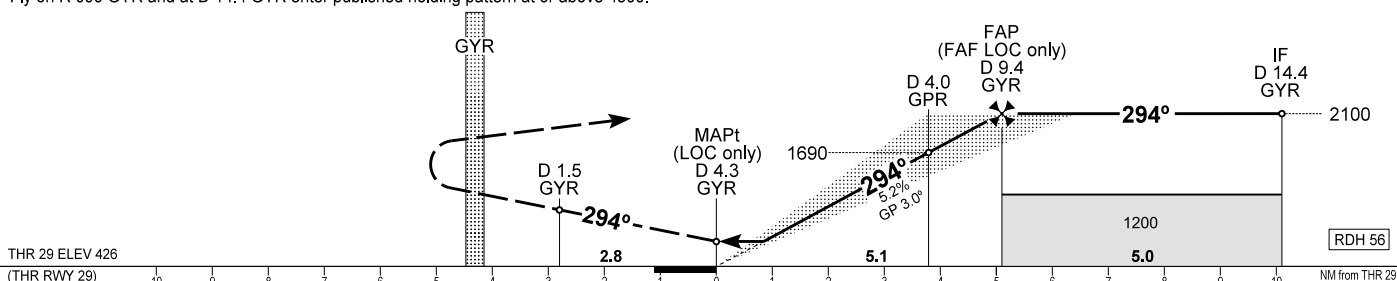


## AIP HUNGARY

INSTRUMENT  
APPROACH  
CHART - ICAOAERODROME ELEV 426  
HEIGHTS RELATED TO  
THR RWY 29 - ELEV 426PÉR INFORMATION 129.910  
BUDAPEST INFORMATION (WEST) 125.500GYÖR/PÉR  
ILS or LOC RWY 29  
(ACFT CAT A, B, C)

**MISSED APPROACH**  
Climb 4500.  
Proceed initially on R 114 GYR inbound.  
When passing D 1.5 GYR on R 114 GYR turn left heading 045° to intercept R 090 GYR.  
Maximum turning speed 200 KIAS.  
Fly on R 090 GYR and at D 14.4 GYR enter published holding pattern at or above 4500.

TRANSITION ALTITUDE  
10000

CHANGE: AFIS call sign changed

OCA (OCH)			A	B	C	DIST with GYR DME					NM	9.0	8.0	7.0	6.0
STRAIGHT-IN APPROACH	Cat. I.	Press. ALT	637 (211)	649 (223)	658 (232)	DIST with GPR DME					NM	4.9	3.9	2.9	1.9
	LOC only		790 (370)			ALT					ft	1980	1660	1340	1020
CIRCLING APPROACH		ft AMSL	890	940	1180 <small>SW of AD only</small>	Timing not authorized to define the MAPt.									
		VIS. m	1900	2800	3700	GROUND SPEED					kt	60	90	120	150
						FAF - MAPt 5.1 NM					min:sec	5:06	3:24	2:33	2:03
						Rate of descent (319 ft/NM)					ft/min	320	480	640	800

## AD 2 LHPR INSTRUMENT APPROACH CHART ILS OR LOC RWY 29

### ILS approach procedure:

Initial altitude at or above 4500.

Leave GYR VOR on R 090 GYR. At D 14.4 GYR turn right and join CW D 14.4 GYR DME arc.

After crossing R 106 GYR leading radial turn right and intercept R 114 GYR inbound (final track), to D 14.4 GYR (IF) descend 2100.

When crossing D 9.4 GYR (FAF) descend to published minimum altitude.

### Holding procedure:

Holding fix: GYR R 090 / D 14.4

Right hand holding pattern.

Maximum speed: 210 KIAS

Inbound track: 090°

Outbound track: 270°

Outbound timing: 1 min.

Minimum holding altitude: 4500

Maximum holding altitude: 8500

Rate of turn: 3°/sec. or 25° bank angle

(whichever requires lesser bank)

Entry: Sector 1 (parallel) and Sector 2 (offset) entries prohibited